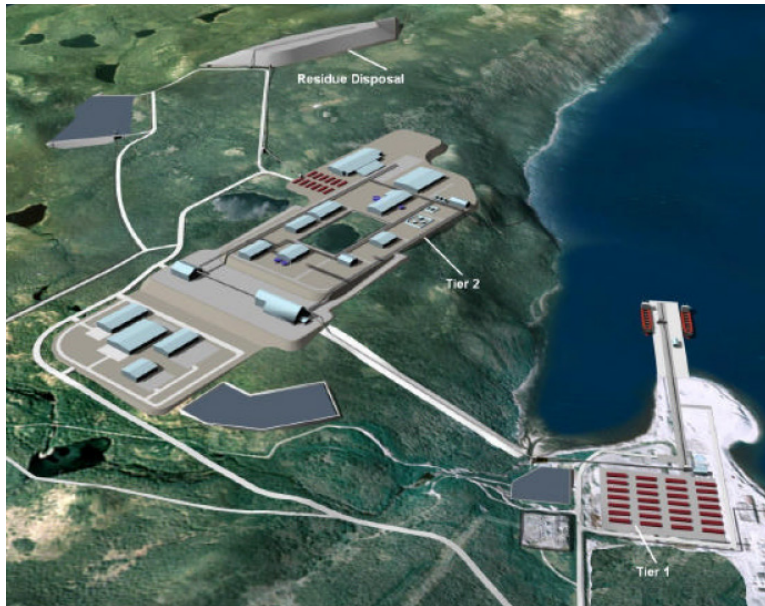


## LONG HARBOUR NICKEL PROCESSING PLANT ENVIRONMENTAL IMPACT STATEMENT



Client: Vale Inco NL Ltd.

Date: 2008- 2009

**Project highlights:**

- Prepare draft EIS
- Coordinate all text input
- Provide editing and review of text
- Prepare Executive Summary
- Manage document Production
- Participate in meetings with regulators

### Project Description:

Sikumiut was commissioned to provide coordination services in order to produce an Environmental Impact Statement for the proposed Vale-Inco NL Nickel Processing Plant at Long Harbour, Newfoundland. A large team of consultants had prepared component studies to describe the existing biophysical and socio-economic environment of the area. As well, project description material had been prepared for the two main options under consideration (both of which had to be assessed).

The major tasks carried out, included:

- Development of a common format for text preparation
- Provision of technical and copy editing of all component submissions
- Developing text for selected sections of the EIS, including: Executive Summary; Effects Assessment Conclusions sections; Mitigation, Monitoring and Follow-Up programs
- Review of critical text, e.g. HHRA and ERA reports
- Data management and Document control services
- Technical support for handling of electronic records
- Provision of geomatics services
- Coordination of graphics production and integration into the EIS
- Review and Editing of Project Description text
- Collection of required ancillary information (e.g. consultation with aquaculture operators)
- Preparation of a public Overview document to describe the conclusions of the EIS
- Presentation of EIS organization and contents to EA Review Committee

## Marine Sediment Contaminant Delineation Long Harbour, Newfoundland



**Client: Vale Inco NL Ltd.**

**Date: 2008**

**Project highlights:**

- **Diver Sampling**
- **Sediment quality**
- **Recovery and Disposal Planning**

### **Project Description:**

As part of Project Planning for the Nickel Processing Facility at Long Harbour, a survey was required to characterize the nature and extent of sediment contamination proximate to the Long Harbour wharf in an area where dredging will be required for vessel access. The suspect contaminants included metals, phosphorus, naturally occurring radioactive material and PCBs.

Sikumiut developed a Safety Plan and executed a grid sampling program using SCUBA over the affected area, collecting geo-referenced sediment samples. The results were compared against regulatory standards (CCME) for retrieval and disposal. A recommendation was made for sediment recovery, transport and disposal that will be cost-effective and compliant with regulatory standards.

## SHIP'S TRACK PONTOON CROSSING VOISEY'S BAY, LABRADOR



**Client:** Vale Inco NL Ltd.

**Date:** 2006-2009

**Project highlights:**

- **Project definition**
- **Development of project concept from first principles**
- **Design, test and implement solution**

### **Project Description:**

The Voisey's Bay Mine and Mill in Labrador requires shipping year-round, including during winter when the landfast ice provides a transportation corridor for North Coast residents. A Shipping Agreement entered into with Labrador Inuit Association (now Nunatsiavut Government) requires that safe passage be provided within a reasonable time period following each vessel passage. Natural re-freeze of the broken track would normally occur within an acceptable time frame, however experience has shown that there can be prolonged periods when re-freeze is delayed considerably. The challenge was to develop a portable, deployable system across the 30m width of a ship track and avoid having the structure freeze in and become an impediment to ship passage.

In 2006 Sikumiut proposed a concept of using a series of modular units supported by pontoons. This concept was tested with a prototype unit in 2007. In 2008 a fully developed system was designed, constructed and deployed at the site. This system was operated successfully and, with minor modifications will continue to be deployed as needed.

The pontoon system was fabricated within the Province. It can be deployed and recovered using snowmobile power and a komatik-mounted winch. With little, if any delay, travelers can access recreational and hunting areas. This system has received a positive response from the local community.

## Community Effects Monitoring North Coast Labrador



**Client:** Vale Inco NL

**Date:** 2005 - ongoing

**Project highlights:**

- Stakeholder consultation
- Issues scoping
- Monitoring design
- Community reporting

### Project Description

As a result of the Environmental Assessment of the Voisey's Bay Mine and Mill Project, the company (formerly Voisey's Bay Nickel Co. Ltd.) was required to monitor the effects of the Project on the affected communities along the Labrador North Coast and Sheshatshui. The work was conducted on contract to the mining company, but managed by a Steering Committee comprising Nunatsiavut Government and Innu Nation. Within each community a Liaison Committee assisted in the consultation program and provided advice on priority issues for their community.

*Sikumiut* set up a team comprising socio-economic professionals and community consultation specialists, with the latter an Inuk from a North Coast community.

The Team developed a baseline description of each community, held scoping meetings and established research priorities. In 2008 a series of interviews were conducted with Site employees who are resident in the Study Area communities.

Two annual reports have been developed along with a series of "Issues-Specific" presentations.