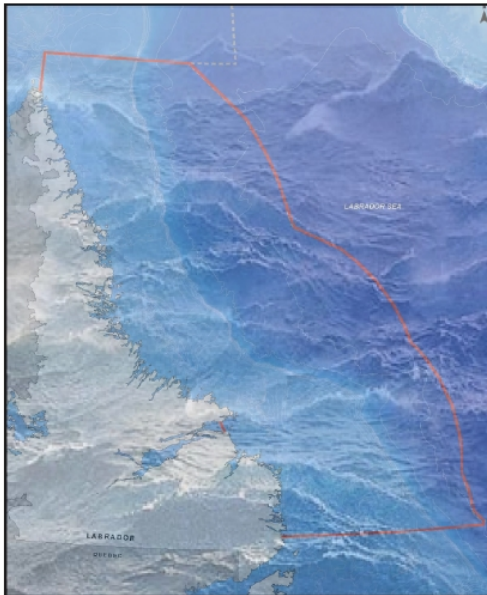


## LABRADOR SHELF STRATEGIC ENVIRONMENTAL ASSESSMENT



**Client: Canada-  
Newfoundland and  
Labrador Offshore  
Petroleum Board**

**Date: 2007-2008**

**Project highlights:**

- **Prepare draft SEA**
- **Conduct Community Consultation**
- **Describe potential offshore facilities**
- **Identify environmental gaps and issues of concern**

**Project Description:**

In preparation for offshore oil and gas activities in its area of jurisdiction the Canada-Newfoundland and Labrador Offshore Petroleum Board (C-NLOPB) undertakes Strategic Environmental Assessments (SEA) to broadly identify any major issues and concerns and data/information gaps in the area.

Sikumiut was commissioned in 2007 to undertake an SEA for the Labrador Shelf Area and a final report was issued in 2008.

The major objectives of the SEA were:

- Provision of an overview of the existing environment in the area;
- Discuss in broad terms the potential environmental effects which may be associated with offshore oil and gas activities;
- Identify knowledge and data gaps and the need for additional studies;
- Highlight any key issues of concern, incorporating the results of consultations with regulatory agencies, stakeholders, aboriginal people and the public;
- Identify areas of interest or sensitive areas;
- Make recommendations for environmental management, mitigation and planning that should be employed;
- Identify general restrictive or monitoring measures that may be required for future offshore oil and gas activities; and
- Assist the C-NLOPB in determining whether exploration rights should be issued in whole or in part in the area.