

Ice Surveys Voisey's Bay Project Shipping Route Anaktalak Bay, Labrador



Client: Labrador Inuit
Association

Date: 2003 - 2009

Project highlights:

- Ice Monitoring
- Wildlife Observations
- Snowmobile Traffic

Project Description:

Sikumiut designed a survey methodology to document the pattern of ice and snow growth and melting along the route selected by Voisey's Bay Nickel Co. Ltd. for Winter Shipping to Edwards Cove, Anaktalak Bay.

The surveys were carried out weekly at stations selected to provide typical conditions with respect to ice (and snow) thickness. Other sampling sites were selected at known ice fissures identified by Inuit in the vicinity of VBNC's proposed shipping route. In addition to the priority task of recording ice/snow conditions, incidental observations were to be made of activity patterns in the survey area, including snowmobile traffic and wildlife occurrences.

The Inuit knowledge and experience possessed by the *Sikumiut* field team enabled the collection of accurate information in a safe manner, but late into the ice season.

Design of Socio-Economic Monitoring Nain, Labrador



Client: Labrador Inuit
Association

Date: 2004

Project highlights:

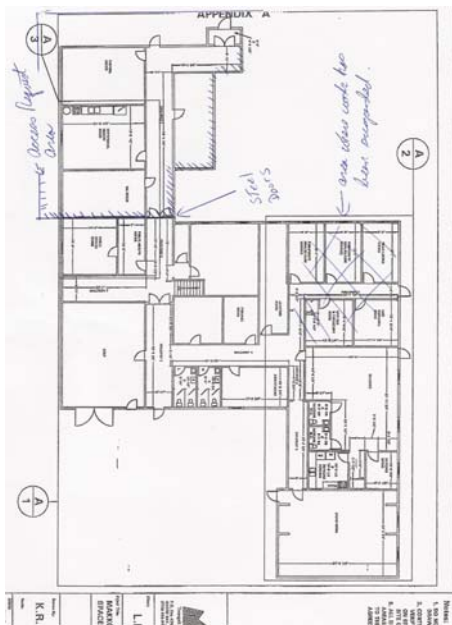
- Stakeholder
consultation
- Issues scoping
- Monitoring design
- Statistical design

Project Description

The Labrador Inuit Association (LIA) retained *Sikumiut* to carry out a consultation program and develop a design document to address the community effects resulting from construction and operation of the nearby Voisey's Bay Mine and Mill Project. As part of the Environmental Impact Assessment for the Project, a series of social, cultural and economic issues were identified and predictions made on the effects of the Project on the people and communities of the North Coast of Labrador. Nain is the nearest community to the Project and will be most affected as a result.

Sikumiut reviewed the Voisey's Bay Environmental Impact Statement and developed a listing of issues of concern. The various information sources in the community were identified and assessed for their relevance to the Project. A program of information collection was then designed. The design called for a series of detailed interviews with two groups of community residents – Project workers and those not directly reliant on the Project. The information collected would enable indicators to be examined to establish the nature and extent of Project effects – both positive and negative. This monitoring information would be used to support the development and application of mitigation measures to enhance positive effects, and to reduce negative ones.

Asbestos Abatement Program Markland Building, Makkovik



CLIENT:
Labrador Inuit Development
Corporation
DATE: 2004

PROJECT HIGHLIGHTS:

- Asbestos abatement
- Mould abatement
- Air quality monitoring
- Project management
- Regulatory compliance

DESCRIPTION OF PROJECT:

Sikumiut was contracted by LIDC to obtain release from a Closure Order, and to develop a work scope of required abatement for an office building in Makkovik. The work involved contractor selection, facilitation of logistics and regulator liaison. A key challenge was to locate a site that was suitable for receipt and burial of the asbestos and mould containing material.

During the abatement work, *Sikumiut* provided site monitoring for worker safety. The contractor's plan was reviewed and critiqued. The containment set-up was examined and approved. During the remediation work, samples were collected and evaluated to establish ambient conditions as well as breathable air exposures. A report was prepared on the results of the program, both with respect to workplace environment and the state of the building following the abatement program.